

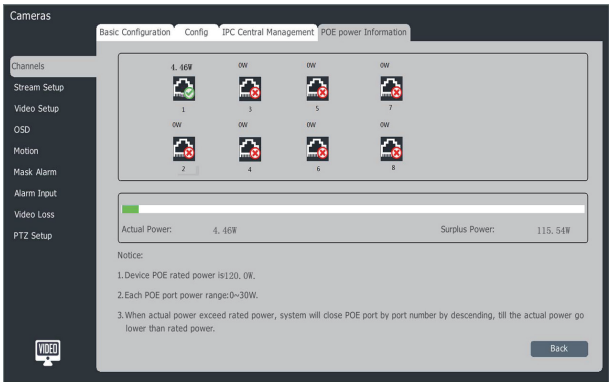
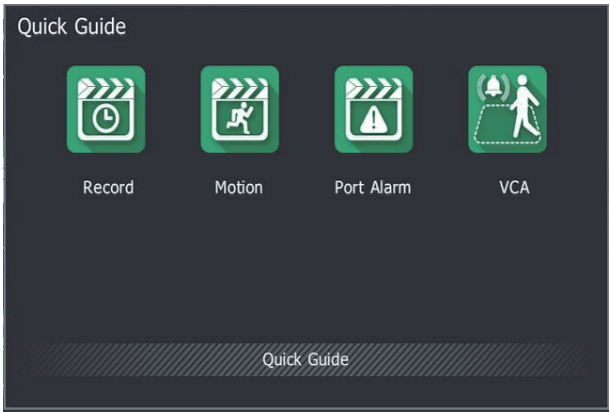


2.The plug-and-play of PSE channel in PSE_NVR is enabled by default; after the pow supply IPC with POE is inserted into the POE port of device, the connection status of network port and power information are displayed in the POE power information interface in real time; “” means that the power supply of network port is normal; if “” is displayed, please troubleshoot the network problems.



7. Record Guide

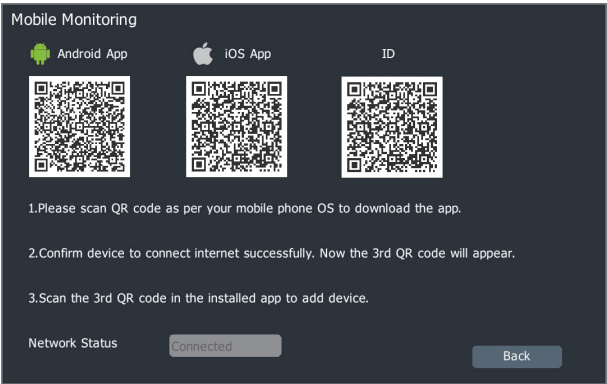
1.Enter “Main Menu->Record Guide” ; the timing recording, motion detection recording, port alarm recording and intelligent analysis recording can be configured conveniently.



2.Click the corresponding video type, set the recording time period, encoding parameter and other parameters and click “Finish” after the setup is completed; then the recording is started according to the set parameters.

9. Mobile Monitoring


NVR mobile monitoring client and ID number can be acquired through local UI menu or Web client.
1.Local UI: in the preview status, click the right mouse button to enter the right-click menu, select “Mobile Monitoring” , scan Android or IOS QR code to download the client according to the mobile operation system, scan ID QR code to acquire ID number and then conduct mobile video preview and other operations.

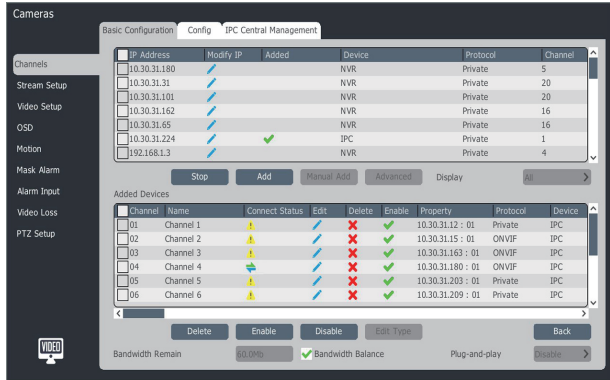


STANDALONE NVR

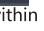
User Manual

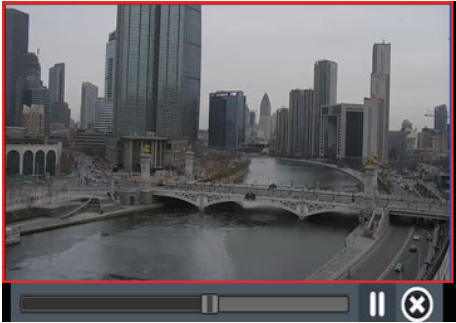
Before installing and operating this device, please read this manual carefully, and ensure to keep it for future reference.

3.After the power supply is normal, the device at corresponding POE network port can plug and play in the corresponding channel; if manual editing is needed, users can click “” for editing.




8. Playback

1.In the preview status, click the left mouse button to select the channel which needs playback, and then click “” in the convenient operation bar to replay the video of this channel within 5 minutes.



2.Select “Main Menu->Playback” , enter the video playback interface and select the video which needs to be replayed according to the video type.

2. Web client: log in IE and click the “” icon at the bottom of interface in the preview interface; then the QR code scanning interface pops up; scan one of the first two QR codes to download the client and scan the third QR code to acquire the ID number of device after the client is downloaded.



Description: the information of QR code shall be subject to the actual display of device, and the third QR code can appear only under the network connection status.

10. Shutdown

Enter the device shutdown interface (Main Menu→Shutdown) and click “Shutdown” . Click “Yes” in the prompt window to complete the shutdown operation.

- Precautions:**
- 1. When the system displays “The system is being shut down” , do not turn off the power.
 - 2. Do not cut off the power forcibly when the device is running.

COMPANY STATEMENT

- 1. We ensure the integrity and accuracy of the Manual contents, if there is any doubt or dispute, we have the right of final interpretation.
- 2. Manual book will be updated according to product enhancements, and described products or processes will be regularly changed or updated. Updated contents will be added in the new version without prior notice.
- 3. The manual contents for user’s reference only, please take practicality as standard.
- 4. Manual book mentioned parts, components and accessories are for illustrative purpose only, do not stand for purchase configuration.

1. Statement

Thank you for purchasing our products and please contact us at any time if you have any question or need.

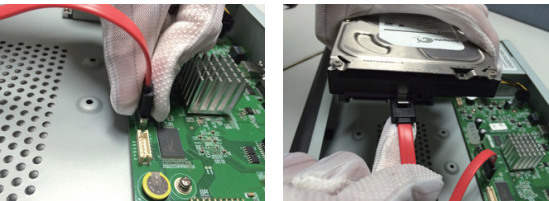
This Manual may contain technical inaccuracies, unconformities in product function and operation or misprints. This Company will update the contents of this Manual according to the enhancement of product functions and regularly improve or update the products or programs described in this Manual. The updated contents will be added in the latest version of this Manual without notice. If the unconformities between the product description in this Manual and real object exist, please in kind prevail.

3. Hard Disk Installation

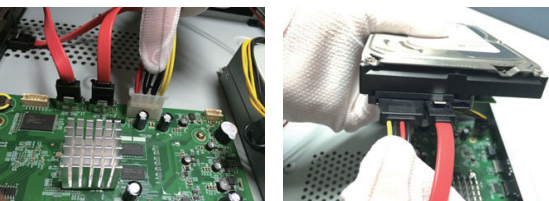
Installation diagram of standard NVR disk:
1.Unscrew the screws at the back and side of chassis and remove the upper cover.



2.Connect one end of hard disk data line to the SATA interface of NVR mainboard and connect the other end to the hard disk.



3. Connect one end of hard disk power line to the SATA interface of NVR mainboard and connect the other end to the hard disk.



4. Startup

Confirm that the power required by NVR is used before startup and ensure that the grouding terminal of NVR is good. Confirm that the connection between NVR video output and display is good before startup.

After the power is plugged in and the power switch on the back panel is turned on, the device will make a “tick” sound and then start normally.

Default user name of device: admin, password: admin

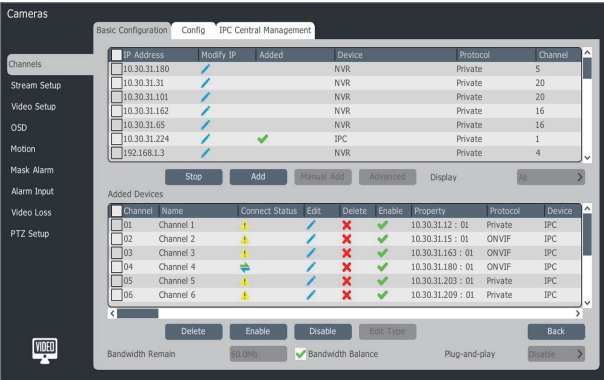
6. Digital Channel Adding

Standard NVR series:

1.After “Main Menu->Channel Cameras->Channels Configuration->Basic Configuration” is selected and the “Search” button is clicked, the device will search automatically, the “Search” button will become “Stop” button and the search will be stopped by clicking the “Stop” button.

2.Select the IPC to be added when the search is completed or in the search process and click “Add” or double click IPC for adding.

3.The added IPC will be displayed on the added device after the adding is successful. If the connection status is displayed as “ ”, it indicated that the adding is succseeful; if the connection status is displayed as “ ”, it indicated that the adding failed; please check whether the network or adding is correct.



4.Click “ ” in the added device to reedit the channel information of device.

2. Safety Precautions

- 1.Do not place the container with liquid (such as water cup) on NVR.
- 2.Install NVR at the position with good ventilation. When a number of devices are installed, the space between devices shall be more than 2cm.
- 3.Make NVR work in the allowable temperature (-10℃~+55℃) and humidity (10%~90%) range. (The working temperature range of H.265series NVR is 0℃~+55℃ when the RAID mode is opened; the working temperature range of H.265 series NVR E16 mode is +20℃~+55℃ when the redundancy mode is opened)
- 4.Make sure to unplug the power line and cut off the power entirely when cleaning the device.
- 5.The dust on the circuit board in NVR will cause shortcircuit after being exposed to moisture, so please regularly use the soft brush to dust the circuit board, connector assembly, chassis and chassis fan. If the dirt is difficult to remove, use a diluted neutral detergent to wipe off the dirt and then wipe it dry.
- 6.Do not use the volatile solvents, such as alcohol, benzene or diluent when cleaning the device; do not use the strong detergent or detergent with abrasiveness which may damage the surface coating.
- 7.Please buy the monitoring SATA hard disk from the formal channels to ensure the quality and operating requirement of hard disk; our company recommends the Seagate monitoring hard disk.
- 8.In the video configuration process, the maximum storage stream of single disk group shall not be higher than 100Mbps (for H.265 series NVR E16 mode, the maximum storage stream of single disk group below 0℃ shall not be higher than 50Mbps).
- 9.Make sure that no danger will be caused by uneven mechanical loads.
- 10.Make sure that there is enough installation space for video and audio cables and the bending radius of cable shall not be less than 5 times of external diameter of cable.
- 11.Please make sure that NVR is grounded reliably.
- 12.Improper replacement of battery may cause an explosion danger, so it is not recommended to replace the battery directly by users. If replacement is needed, replace with the same type or equivalent type of battery only.

4.Fix the hard disk screw at the bottom of NVR chassis, put the upper cover on the chassis and fix it with screws.

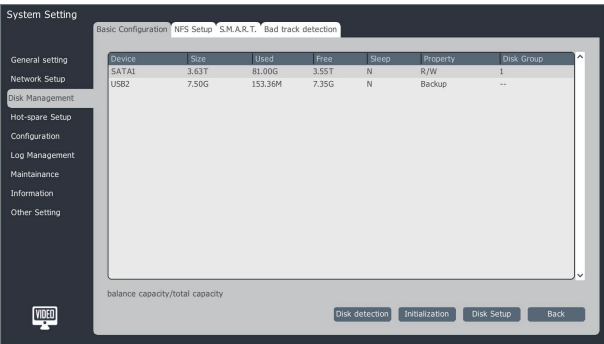


Installation diagram of front disk NVR:
1.Install the set screws of hard disk and insert them into the slot positions of corresponding hard disk on the front panel.



5. Disk Initialization

1. Select “Main Menu->System Setting->Disk Management” , enter the disk management interface and select the disk to be set for formatting and other operations.



PSE series NVR:

1.Select “Main Menu-> “System Setup” -> “Network Setup” -> “PSE Network Card” and enter PSE network card setup interface to set the IP address of PSE network card.

