


1. Introduction

Thank you for choosing our product, if you have any queries while using them, don't hesitate to ask our agent or after-sale service department for help. To avoid personal injury and property damage, you need to read this handbook earnestly, you'd better keep it for further reference.


2. Safety Instruction

You shall obey safety rules listed in production handbook, and we divided them as warning and notice.



**WARNING** prevent the potential risk of death or serious damage.

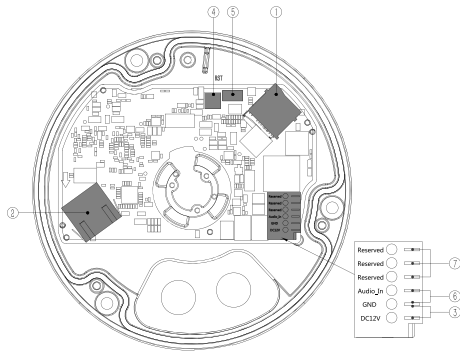
1.Do use SELV power.  
2.Please contact our agent if the apparatus cannot work properly, don't dismantle them by yourself.  
3.Don't expose this product in the rain or humid environment.  
4.Make sure the ceiling can support 4 times weight of the product.



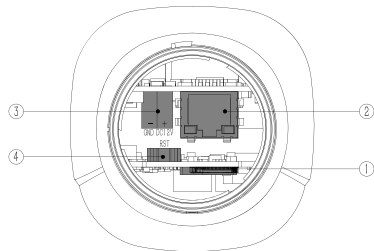
**NOTICE** prevent the potential injury or property loss.

1.Use original packaging to transport or keep the equipment. Avoid pressure, shake and immersion.  
2.Keep the lens and sensor clean.  
3.Do not focus on the intense light source.  
4.Do not set the facility in moist, dusty, and extreme hot or cold, severe radiation environment.  
5.Make the facility have good ventilation.  
6.Stay away from Electromagnetic sensitive devices.  
7.Do not let water or any other liquid get inside of the apparatus.  
8.Do remember reset your own username and password after first enter.  
9.Cut off electric power before remove micro SD card or USB devices.

3. Interface Introduction



3-1 Vandalproof eyeball camera interface



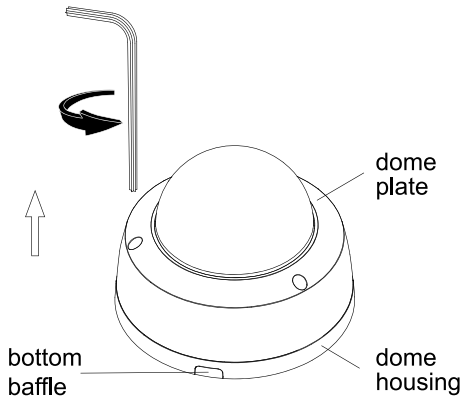
3-2 Mini bullet camera interface

Order	Interface	Introduction
①	micro SD slot	You'd better use micro SD card larger than 8GB, Cut the power before operate it.
②	Internet interface	Use reticle within 100 meters.
③	Power interface	Use DC 12V charger ,voltage fluctuation within 10%
④	Hardware reset	Press it for 5 second. This operation will delete all your personal data, and reset all settings to the manufacturer default settings.
⑤	MIC interface	Connect the microphone.
⑥	Audio in	Audio sampling or microphone.
⑦	Obligate interface	For obligate function

3-3 Interface instruction

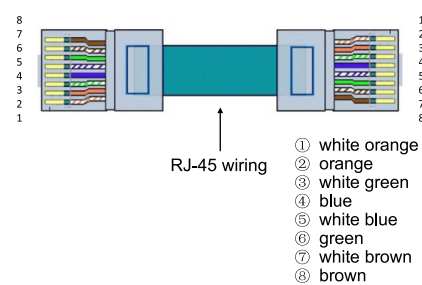
4.Set up

4.1 Vandalproof eyeball camera interface

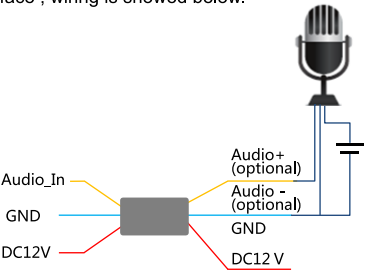


Step 1 Remove the screw, open the eyeball camera. Notice:Pls dismantle the bottom baffle if side assembling needed.

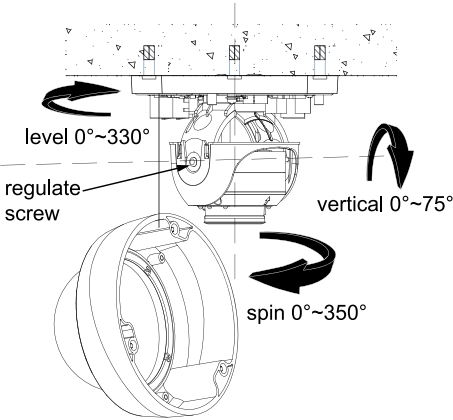
Step 3 Connect the power line (optional) to the right interface, make the reticle with right RJ45 order, and connect them.  
1.RJ-45 wiring



2.DC12V and audio in share the same GND interface , wiring is showed below.



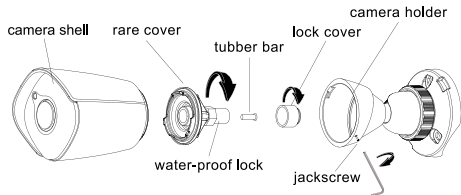
Step 2 Stick the location tag to the place where the camera is placed, drill the aperture as aperture B, set the expand tube in the newly made aperture. Aperture A is outlet, if you need. Drill as the picture showed. Across the audio line (optional) and reticle in the bottom aperture. Cable diameter is 3mm-5mm, pull back the line after you set them to make sure the waterproofness. Then use 3 Self-tapping screws (optional) fasten the eyeball camera to the ceiling or the wall.



Step 4 Remove the mask, unscrew regular screw, set the right angle as shoew, adjust the view you want, Fasten screw.

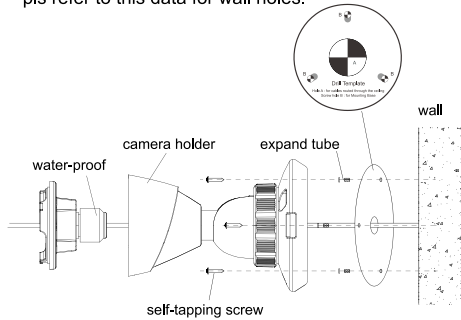
Step 5 Fasten the shell to the pedestal, fasten screws remove mask. Finish.

4.2 Mini bullet camera interface



Step 1 Remove the screw, remove camera holder. Remove rare cover as guide showed, open water-proof, remove rubber bar.

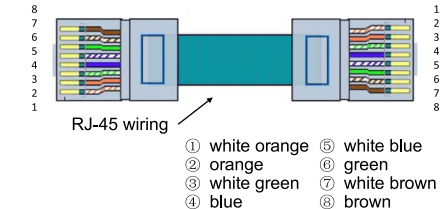
Note:Screw hole diameter is 4.5mm, pls refer to this data for wall holes.



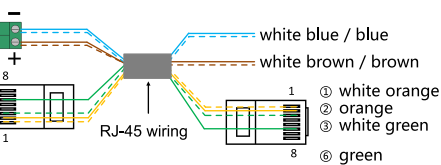
Step 2 Stick the location tag to the place where the camera is placed, drill the aperture as aperture B, set the expand tube in the newly made aperture. Aperture A is outlet, if you need. Drill as the picture showed. Across the audio line (optional) and reticle in the bottom aperture. Cable diameter is 3mm-5mm, pull back the line after you set them to make sure the waterproofness. Then use 3 Self-tapping screws (optional) fasten the eyeball camera to the ceiling or the wall. Across the reticle in the water-proof lock and rare cover.

Step 3 Make reticle RJ-45 terminal and power terminal

1.POE power supply



2.Other power supply.



After the software installed, reopen browser, Input the device IP address. Input your username and password admin/admin. Then click log in.

### 5.2 Reset default password

Default password is only for the first user, to avoid unnecessary loss, reset it on time.

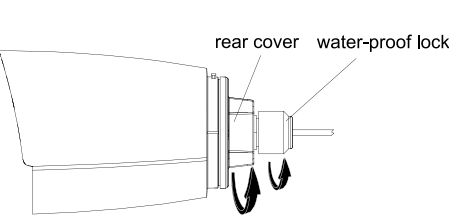
1.If the equipment is default password, after first logging,there will be prompt box under the right side, click the notice, click **【Modify pwd】** to set the password.

2.Set-User Management-User management, click into **【User management】** ,click **【Modify pwd】** to set the password.

### 5.3 Reset IP address

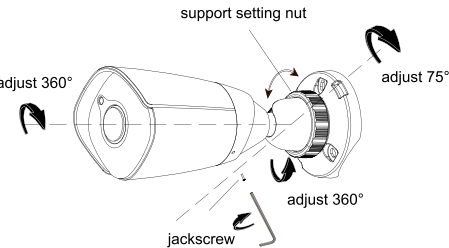
To avoid IP conflict, please reset IP address on time.

After logging, please follow the steps: set-network management—cable network, step in the cable network to set the configuration. If you want Obtain IP address automatically, check the option. If you want Obligate IP address manually, make sure IP address and gateway are in the same segment.



Step 4 Fix rare cover to the original place, judge the wire length, then lock the water-proof lock.

Notice: Make sure the correct match between the end cover and the outer housing of the IP camera.



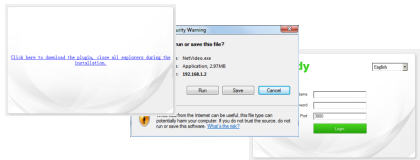
Step 5 Fasten the shell to the pedestal, fasten screws remove mask. Finish.

## 5. Quick Guide

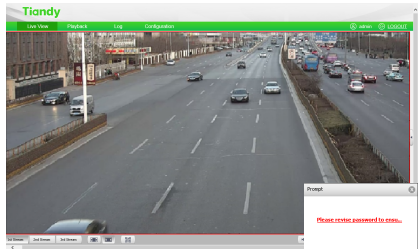
### 5.1 WEB Register

Default static IP address is 192.168.1.2, subnet mask:255.255.255.0,gateway: 192.168.1.1, set PC IP and camera IP as the same segment. Use IE browser (above IE8.0)

If you use our product for the first time, plug-in software is needed. Click the link showed in the window, download and install NetVideo.exe.



5-1-1 Login WEB



5-1-2 Preview interface

## Appendix 1 FAQ

Question discription	Measure
Leak or fogging	Do not open the camera in moist environment. Check the seek screw. Reticle and lock make waterproof operation. Front glass suffered hit or press, send camera back to our factory.
Infrared not work	Use standard power. Monitoring view beyond the distance. Change the scratched lens or protective cover. Choose night mode.
No reminder for plug-in software for the first login	Enter control pedal, click users control, choose change, set never remind me.
Installation fault	Add the IP address to trusted sites save plug-in software locally ,run it as administrator.
Cannot log in via WEB	ATI video driver problem. Network or settings have some trouble. Wrong username or password. Reinstall the plug-in software.
Instable power	Power adapter doesn't fit the requirement. Power adapter doesn't work in the proper range of temperature.
Picture perversion	Log in the product ,in the preview section ,click right-hand button, choose video reversal.

## Appendix 2 Maintaining Introduction

Maintaining matters	Measures
Lens maintaining	Use soft brush or blowing clean the dust. Use mull clean lens and dry it, then use cloth with alcohol clean again.
Transparent protector maintaining	Transparent protector is made of plastic, dust, oil and fingerprint will be bad for image quality. Use soft brush or blowing clean the dust. Use mull clean lens and dry it, then use cloth with alcohol clean again.
Camera glass maintaining	Use clothes clean lens and dry it, then use cloth with alcohol clean again.

# Tiandy

TIANJIN TIANDY DIGITAL TECHNOLOGY CO., LTD.

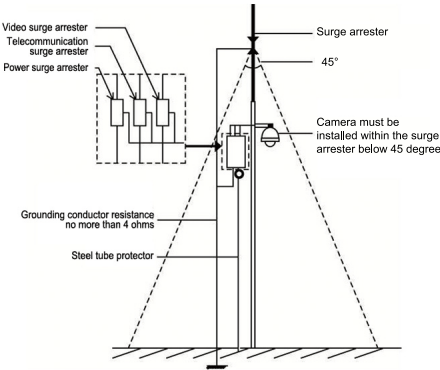
# User Manual

www.tiandy.com  
1H.02001.016628

## Appendix 3 Anti surge notice

Outdoor productions need to consider the lighting or surge, you can take the following measures.

- 1.Signal line needs to keep away from high voltage at least 50m.
- 2.Set the line under eave.
- 3.Never use overhead line in open area.
- 4.Set up lighting rod in necessary district.
- 5.System must adopt equipotential grounding.



# Tiandy

Tianjin Tiandy Digital Technology Co.,Ltd.

No.8, Huake Rd2, Binhai Hi-Tech Zone(Huayuan)  
Tianjin 300384 China  
TEL: +86-22-58596000  
FAX: +86-22-58596111  
Email: support@tiandy.com